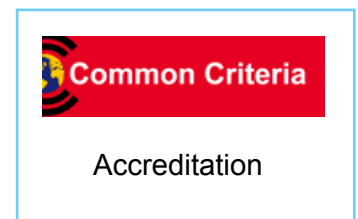


CS100 Ethernet Encryptor

Senetas CS100 Ethernet encryptors are flexible encryption platforms designed as 1U high, 19" rack mounting systems that can be integrated into modern Ethernet networks. The units can be configured for point to point or multipoint operation at speeds of up to 100 Mbps.

Key Features

- Full duplex line-rate encryption at up to 100 Mbps
- Certified to Common Criteria EAL4+ security level
- Bump in the wire design for easy installation
- Supports Line or Multipoint connections
- Conforms to IEEE802.3 specifications
- Uses the secure AES 256 bit encryption algorithm
- Supports SEED, Aria, Camellia and custom algorithms
- Self synchronising CFB mode minimises traffic disruption
- VLAN, MPLS transparency allowing flexible configuration
- Hands-off automated key management
- Standards based trust model using X.509 certificate authentication
- Centralised CypherManager configuration and management system
- Tamper resistant and tamper evident metal enclosure
- Interoperable with all Senetas CS10 and CN1000 Ethernet encryptors
- Switchable between layer 2 and layer 3 (IPSec) modes.
- IPSec mode implements ESP tunnel



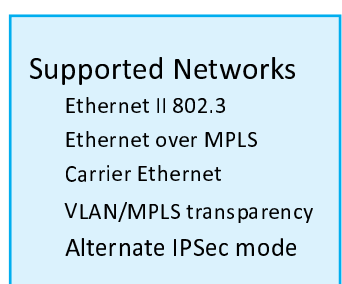
Overview

The CS100 provides users with flexible encryption that addresses the needs of small to medium sized organisations that need to transfer sensitive information between branch offices. Encryptors can be used to secure point to point links or used in a meshed network with up to 509 connections.

The unit operates in full-duplex mode at full line speed without loss of packets. Latency is a function of transmission speed and packet size and is typically 1 millisecond.

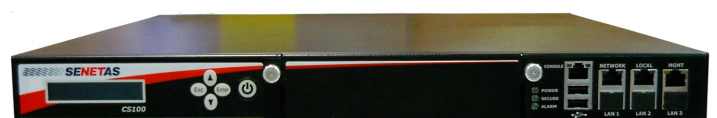
Network and Management

CypherManager, Senetas' element manager can be used to configure and manage the CS100 within the network. The unit can operate as a layer 2 encryptor or as a layer 3 (IPSec) device. SNMPv3 and Command Line Interface management connections are via RJ45 connectors on the front panel. The local (protected) and network (unprotected) 10/100Base-T connections are made using CAT5 cables with RJ45 connectors. Support for Ethernet 802.3 and VLAN 802.1Q standards is provided.



Order codes:

CS100 100Mbps Ethernet/IPSec



Specifications

Cryptography

AES encryption algorithm
128 or 256 bit session keys
Self synchronising CFB mode
256 bit master keys
Optional algorithms (SEED, Aria, Camellia, custom)

Key Management

ATM Forum V1.1 specification
X.509 certificate authentication
RSA Public key Infrastructure
Periodic automatic key updates
Master and Session keys

Performance

Auto-negotiation of line speed
Speed of up to 100Mbps
Latency of 1 millisecc (typical)

CypherManager

CypherManager element manager
IPv4 and IPv6 support
Automatic encryptor discovery
SNMPv3 control, SNMPv1 monitoring
Out-of-band and Inband management
Alarm, Event, and Audit logs
SNMP traps and monitoring
RS232 local console (CLI)

Certification

Common Criteria EAL4+

Front Panel

LCD status display
LED's for interface, security, temperature, alarms, power.
Power switch
RJ45 Local and Network connections
RJ45 Management connections

Rear Panel

Power socket

Installation

Size - 435mm (19"), 44mm (1U), 480mm (WxHxD)
Weight: - 6.8 Kg
0° to 40°C operating temperature
0 to 80% RH at 40°C operating

Shipping/Storage

Size - 580mm, 200mm, 580mm, (WxHxD)
Weight - 7.9Kg
Max temperature 40°C, 95% RH at 40°C

Physical Security

Tamper proof Key storage
Tamper resistant/evident metal case
Anti probing barriers

Power Requirements

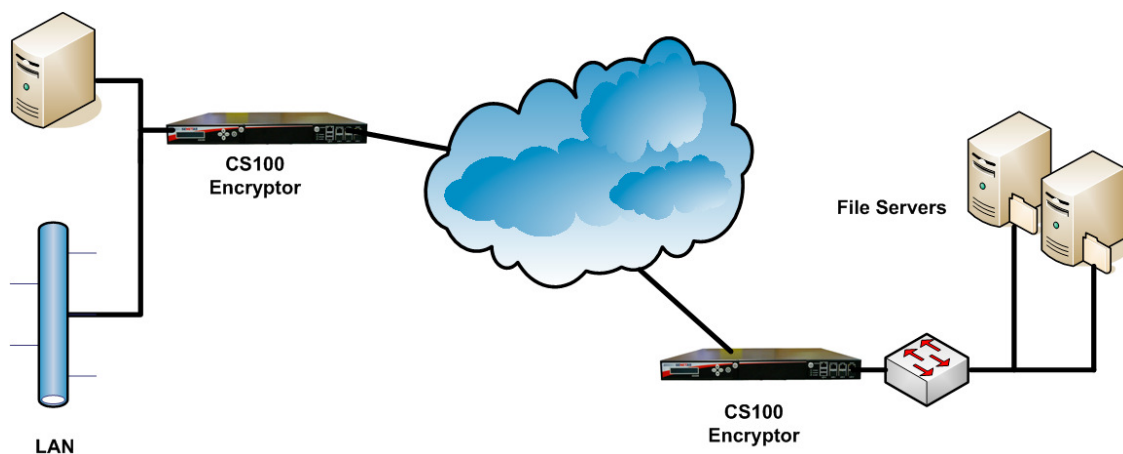
90-240 VAC / 47-63 Hertz
70 watts maximum
IEC 13 connector

Regulatory

Emissions - FCC Part 15 Class B
RoHS compliant
Other - CE and N3912



All specifications are accurate as of the time of printing and are subject to change to meet the ongoing requirements of Senetas and its customers.



Network example